

# PRO Print Manager

Achieve Superior Output Management

## Business Issues

Successful management of today's document output requirements has become increasingly complex. Print organizations, whether processing critical transactional or marketing communications, must balance the demand for personalized, accurate and timely communications with the need to reduce costs, increase productivity and ensure compliance. This can prove challenging when handling current and legacy applications across multiple varied devices.

## Solution

PRO Print Manager provides print operations with a flexible and robust output management solution to support AFP/IPDS workflows. This cost-effective, scalable solution enables full bi-directional control of IPDS printers resulting in a streamlined, optimized document workflow for managing both current and legacy applications.

CrawfordTech's PRO Print Manager is the ideal solution to help maximize the capabilities of your printing systems to meet your current and future document requirements. The easy-to-use interface enables centralized management and monitoring of IPDS print devices and print queues, simplified job submission and scheduling with convenient document viewing.

## Benefits

- **Maximize device utilization:** process more applications through existing IPDS devices to increase utilization and maximize the return on technology investments.
- **Ensure consistent, accurate output:** bidirectional communication, automated reprinting, device level job accounting, and automated error recovery ensures accurate printing of all jobs.
- **Reduce workflow complexities:** eliminates the need for additional solutions and handoffs ensuring a cost-effective, flexible and scalable solution for managing current and legacy applications.
- **Maximize print performance:** centralized control saves valuable time and resources, reduces errors, and delivers higher efficiencies across production print operation.

## At a Glance

- Cost-effective, scalable solution to drive AFP/IPDS printers
- Centralized management & monitoring of printers and print queues
- Automated reprinting and error recovery
- Integrates with CrawfordTech's PRO Conductor providing control and visibility across enterprise workflows

## Why you may need PRO Print Manager...

- Are you able to fully amortize your fleet of IPDS devices?
- Are you able to maximize the utilization of all your IPDS printers?
- Do you need to integrate third-party software into your production workflow to process jobs on IPDS printers?
- Would your team benefit from a centralized, easy-to-use interface for job submission, scheduling and monitoring?

## Solution Overview

### Flexible Production Control

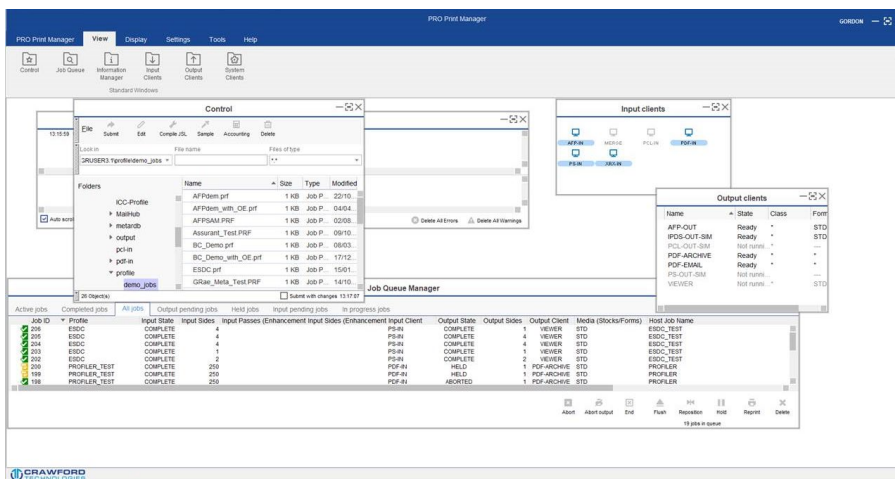
Ideal for high volume, high speed environments, PRO Print Manager delivers the flexibility and control needed to achieve your current and future output requirements.

- Easy, efficient print queue control and management across all AFP/IPDS devices
- Document viewing before, during and after to maintain document integrity
- Device level job accounting and automated error recovery ensures accurate printing of all jobs
- Highly configurable for legacy, modern and multi-vendor printer environments and devices

### Outstanding Performance

To meet critical client and regulatory SLAs, PRO Print Manager drives improved printer performance and job throughput.

- Full bi-directional communication ensures reliable output production with speed, accuracy and security
- Automated reprinting and ADF integration ensure successful completion in the event of a printer fault or other print interruption
- Increase production workflow performance with streamlined data delivery to the target device
- Real-time transformation enables concurrent input and output processing to improve printer performance and job throughput



CrawfordTech PRO Print Manager

## Essentials

### Integrations

- Output Management Solutions
  - Operations Express
  - PRO Transforms
  - PRO Designer
  - SmartSetup
  - Smart MailHub
- CTI Workflow Solutions
  - PRO Conductor
  - PRO Production Manager
  - DataPrep

### Specifications

- PRO Print Manager accepts workstreams from a variety of hosts:
  - UNIX & Linux
  - Windows
  - z/OS
- TCP/IP Connectivity
- Support continuous feed and cut sheet printers
- Simplex and duplex printing
- Industry standard IS/3 compliance
- Automated error recovery
- Continuous status and error messaging throughout print production